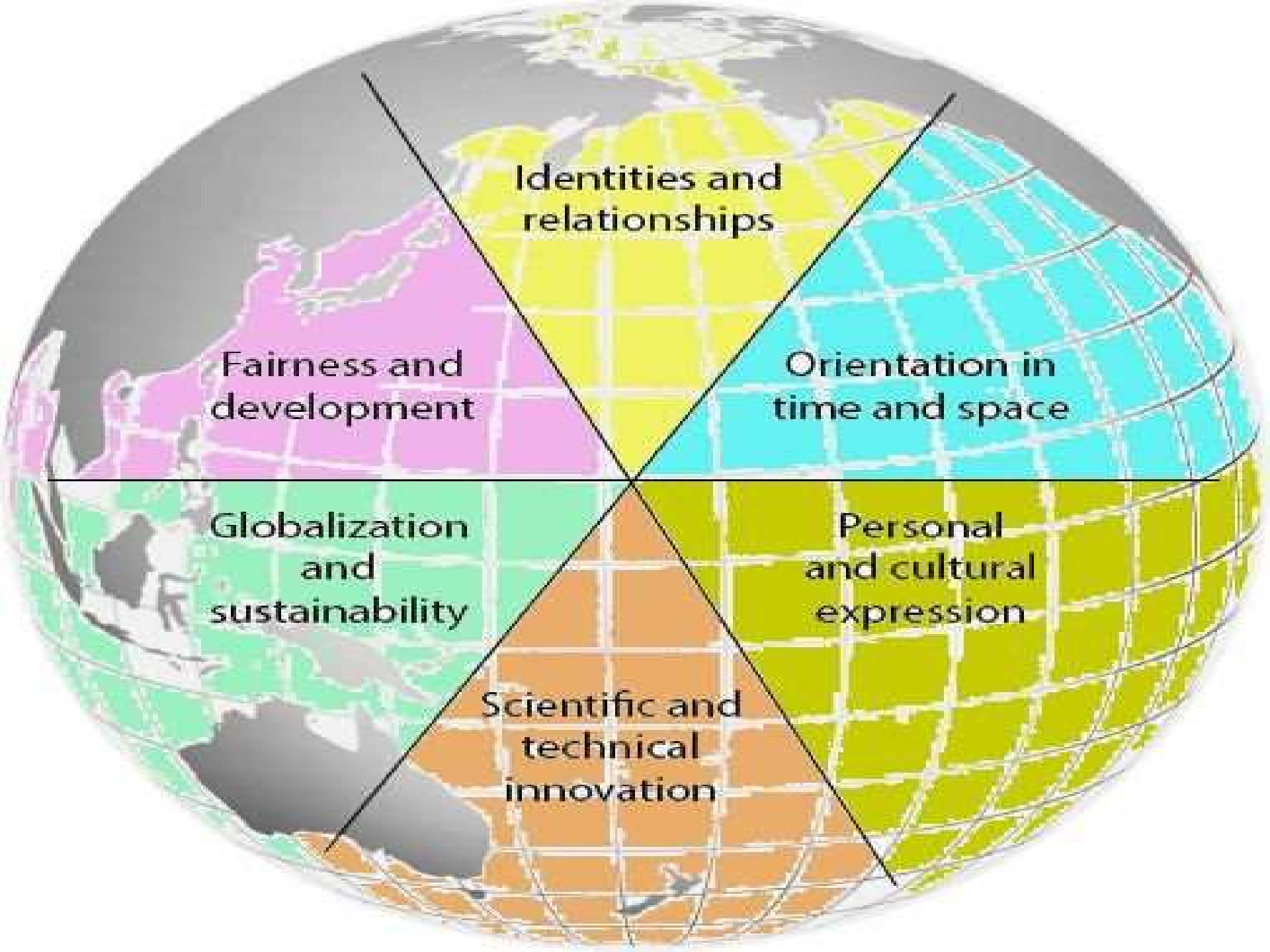


International Baccalaureate

GLOBAL CONTEXTS

What are Global Contexts?

- You learn best when your learning experiences have **context** and are **connected** to your life and your familiarity of the world that you have **experienced**.
- Using **GLOBAL CONTEXTS**, MYP students like YOU develop an understanding of your common humanity and shared guardianship of the planet.



Identities and relationships

Orientation in time and space

Personal and cultural expression

Scientific and technical innovation

Globalization and sustainability

Fairness and development

IDENTITIES & RELATIONSHIPS

IB MYP
Global
Context



Who am I?

Who are we?

- This global context helps you look at what makes you **different** from others and what you **share** with others.
- This is a starting point for understanding other people in your community and beyond.
- For this global context, you explore the questions:
 - *Who am I?*
 - *What makes me who I am?*
 - *How do I relate to others?*

ORIENTATION IN SPACE & TIME

IB MYP
Global
Context



What is the
meaning of
'where' and
'when'?

- This global context is not just about studying the time and place of an event. It also means looking at how the event has made an **impact on personal** as well as **global history**.
- For this global context, you explore the question:
 - *How can understanding the “when” and “where” of events help you to understand the world in which you live today?*

PERSONAL & CULTURAL EXPRESSION

IB MYP
Global
Context



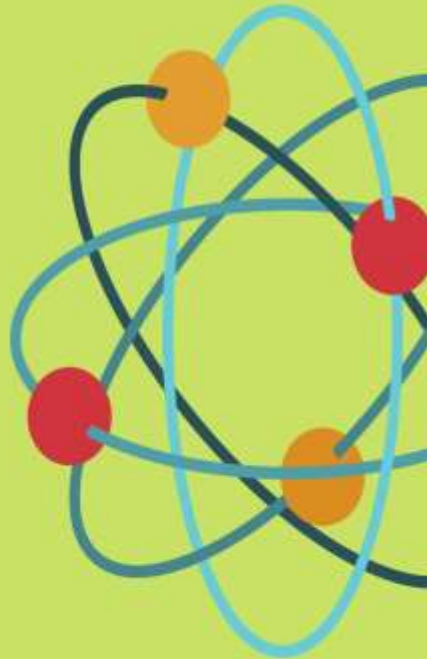
www.excitededucator.com

- This global context is about **creativity** and forms of **expression**. It is also about seeing things from different **points of view**.
- For this global context, you explore the questions:
 - *What does it mean to be creative?*
 - *What are some ways you can express yourself, your culture, and your beliefs?*

What is the
nature and
purpose of
creative

SCIENTIFIC & TECHNICAL INNOVATION

IB MYP
Global
Context



www.excitededucator.com

- This global context is important because science and innovation help you **adapt** to your world.
- Scientific inquiry into the natural world helps you **understand your world** and the **impact** you have on it.
- For this global context, you answer the questions:

– *What impact does the natural world have on you?*

– *What impact do you have on the natural world?*

How do we understand the worlds in which we live?

GLOBALISATION & SUSTAINABILITY

IB MYP
Global
Context



How is
everything
connected?

- This global context is about how **connected** we are worldwide, how we make decisions about global issues and how we can **act in a responsible way** to make the world a better place.
- For this context, you explore the questions:
 - *How are people connected and how does this impact me?*
 - *How can our way of life and the systems we have in place last long term?*

FAIRNESS & DEVELOPMENT

IB MYP
Global
Context



What are the
consequences of
our common
humanity?

- This global context addresses the nature of **conflict and peace** and how they both relate to the issue of **fairness and sustainability**.
- For this global context, you explore the questions:
 - *Why is there war in the global community?*
 - *How can we promote peace, fairness and sustainability?*